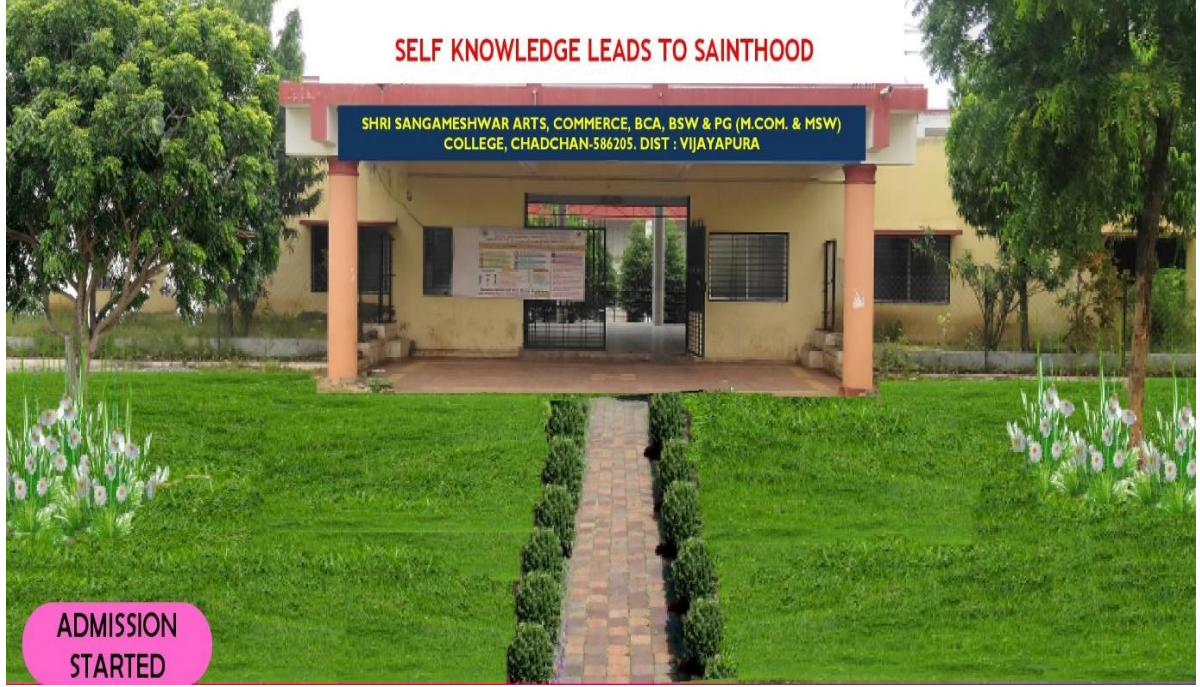




ಶ್ರೀ ಸಂಗಮೇಶ್ವರ ಕಲಾ ಹಾಗೂ ವಾಣಿಜ್ಯ ಮಹಾವಿದ್ಯಾಲಯ

SHRI SANGAMESHWAR EDUCATION
SHRI SANGAMESHWAR ARTS AND COMMERCE
CHADCHAN- 586205 Dist: Vijayapura
Re-Accredited At 'A' Grade By NAAC, 3.02
(Affiliated To Rani Channamma University)



CRITERION VII - INSTITUTIONAL VALUES AND BEST PRACTICES

7.1 - Institutional Values and Social Responsibilities

7.1.4 - Water conservation facilities available in the Institution:

1. Rain water harvesting
2. Bore well /Open well recharge
3. Construction of tanks and bunds
4. Waste water recycling
5. Maintenance of water bodies and distribution system in the campus





7.1 Institutional Values and Social Responsibilities

7.1.4 Water conservation facilities available in the Institution: (Environmental Consciousness and Sustainability)

1. Rain water harvesting
2. Borewell /Open well recharge
3. Construction of tanks and bunds
4. Waste water recycling
5. Maintenance of water bodies and distribution system in the campus

WATER CONSERVATION FACILITIES AVAILABLE IN THE INSTITUTION

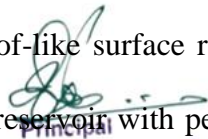
Shri Shri Sangameshwar Arts & Commerce College is surrounded by more than 40 villages. Our College and Pattan Panchayat of Chadchan took up the initiative to promote Institutional Values and Social Responsibilities through MOU in various social development activities.

As, Shri Shri Sangameshwar Arts & Commerce College is in rural area, there is no Municipal Water supply for the college. The college depends on ground water for all its water needs. Hence, efficient usage of available water and adaptation of water conservation measures are essential. The daily requirement of water in the campus is around 20000 liters. The following measures are taken for the conservation of water:

1. RAIN WATER HARVESTING

and Rainwater harvesting (RWH) is the collection and storage of rain water, rather than allowing it to run off. Rainwater is collected from a roof-like surface redirected to a tank, cistern, deep pit (well, shaft, or borehole), aquifer, or a reservoir with percolation, so that it seeps down and restores the ground water. The continuous Rainwater Harvesting strategies enable us to use our on-site water resources, which helped to maximize storage of rain water in an integrated needs our college.




Principal
Shri Sangameshwar Arts & Comm. College
Chadchan-586205, Dist: Vijayapur



2. BOREWELL /OPEN WELL RECHARGE

Water is a prime natural resource and is considered as a precious asset. With every passing day, our dependence on ground water is increasing and is likely to remain dominant. It is clear that College real water lifeline is groundwater. The depletion of groundwater resource is a matter of great concern for college campus. Largescale pumping out of groundwater and negligible recharging has created 'water havoc' in the borewell-fed campus.

3. CONSTRUCTION OF TANKS AND BUNDS

Tanks are often surrounded by bund walls which are generally constructed either of earth or concrete. Bunds are particularly important if a tank is located at a higher elevation than the remainder of the facility. A bund is a secondary containment system which is designed to capture any leaks or spillages from a primary containment such as a storage tank. A bund consists of an impermeable floor and a set of impermeable walls to create a watertight area around a storage tank, any liquid which escapes the primary containment is retained in the bund and prevented from spilling onto site or escaping to the environment.

4. WASTE WATER RECYCLING

Water reuse generally refers to the process of using treated wastewater (reclaimed water) for beneficial purposes non potable applications such as toilet flushing, street washing, and fire protection, groundwater recharge, recreation, and direct or undirected water supply.



4. MAINTENANCE OF WATER BODIES AND DISTRIBUTION SYSTEM IN THE CAMPUS

The College has 04 Borewell for water supply and 01 open pond for rain water harvesting. Water from the Bore well is pumped to the overhead tank of 20000 liter capacity and Open ground tank of 10000 Liter through 04 pumps. The water from overhead tank is distributed to all taps across the campus. The maintenance of plumbing system is outsourced. Whenever the problems are identified immediate actions are taken for restrict wastage of water. Then plumbers are outsourced to fix the problem.




Principal
Shri Sangameshwar Arts & Comm. College
Chadchan-586205 Dist: Vijayapur

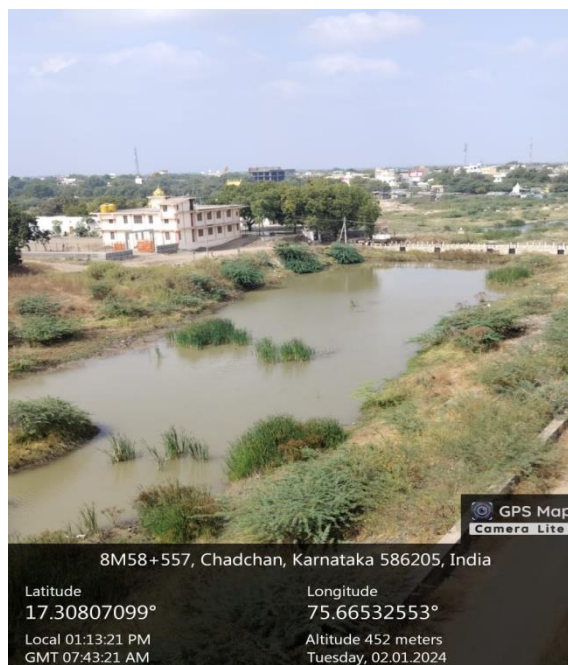
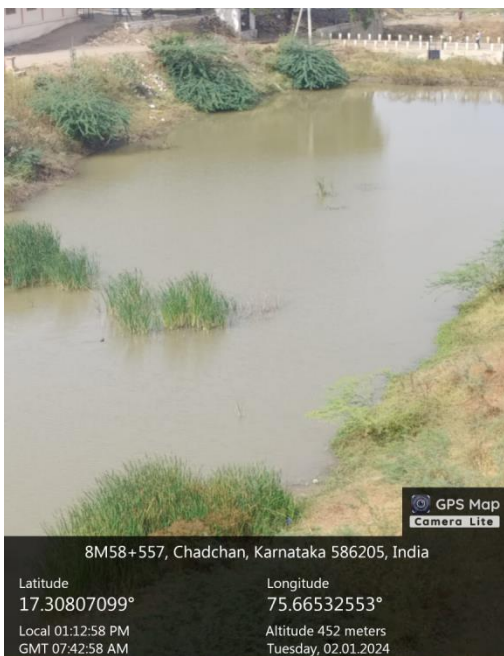


1. RAIN WATER HARVESTING

DEEP PIT



RAINWATER COLLECTION POND AT BACKYARD OF THE CAMPUS



College Code-5221,5262 & 9512
Website : www.ssacollegechadchan.com
e-mail : ssacollege_chadchan@yahoo.com & ssacollege@gmail.com
Principal : rathodshiva31@gmail.com

ಮರಣ ಮಹೋತ್ಸವ ವರ್ಷಾಚರಣೆ : 2022-23
Celebrating Golden Jubilee Year : 2022-23



ಶ್ರೀ ಸಂಗಮೇಶ್ವರ ಕಲಾ ಹಾಗೂ ವಾಣಿಜ್ಯ ಮಹಾವಿದ್ಯಾಲಯ

SHRI SANGAMESHWAR EDUCATION
SHRI SANGAMESHWAR ARTS AND COMMERCE COLLEGE
CHADCHAN- 586205 Dist: Vijayapur
Re-Accredited At 'A' Grade By NAAC, 3.02
(Affiliated To Rani Channamma University)

RAINWATER COLLECTION



DURING RAINY SEASONS





ಶ್ರೀ ಸಂಗಮೇಶ್ವರ ಕಲಾ ಹಾಗೂ ವಾಣಿಜ್ಯ ಮಹಾವಿದ್ಯಾಲಯ

SHRI SANGAMESHWAR EDUCATION
SHRI SANGAMESHWAR ARTS AND COMMERCE COLLEGE
CHADCHAN- 586205 Dist: Vijayapur
Re-Accredited At 'A' Grade By NAAC, 3.02
(Affiliated To Rani Channamma University)

IMPACT OF RAINWATER HARVESTING-DRAINAGE SYSTEM



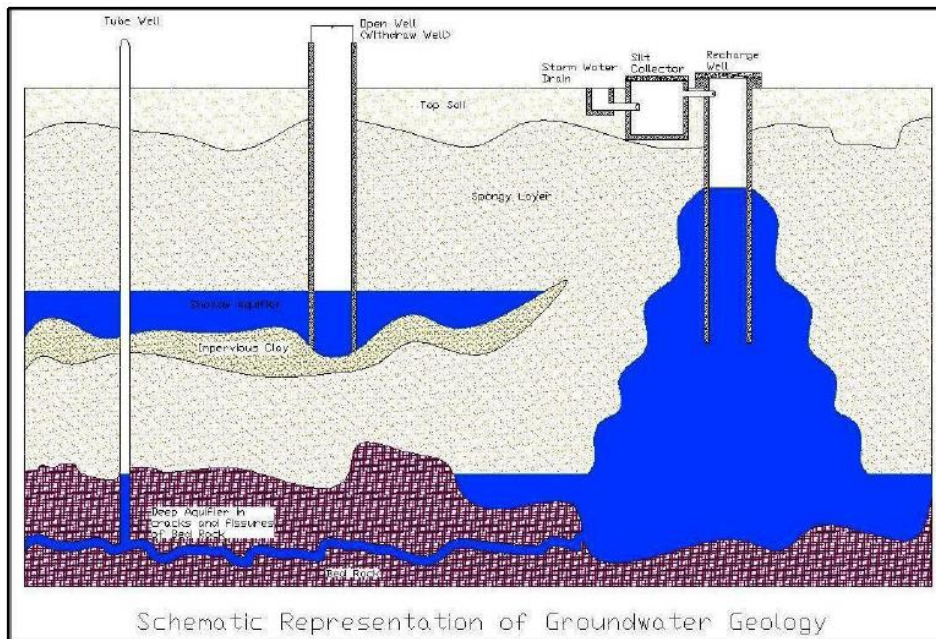
[Signature]
Principal
Shri Sangameshwar Arts & Comm. College
Chadchan-586205 Dist: Vijayapur



RAINWATER HARVESTING-DRAINAGE SYSTEM

2. BOREWELL /OPEN WELL RECHARGE

WELL RECHARGE



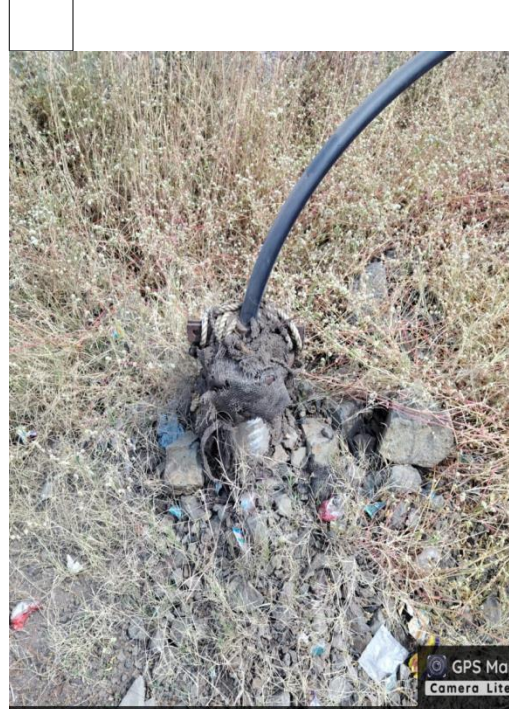





ಶ್ರೀ ಸಂಗಮೇಶ್ವರ ಕಲಾ ಹಾಗೂ ವಾಣಿಜ್ಯ ಮಹಾವಿದ್ಯಾಲಯ

SHRI SANGAMESHWAR EDUCATION
 SHRI SANGAMESHWAR ARTS AND CO
 CHADCHAN- 586205 Dist: Vijayapur
 Re-Accredited At 'A' Grade By NAAC, 3.02
 (Affiliated To Rani Channamma Univers

BOREWELL RECHARGE

Tube Well-1	Tube Well-2
 <p>GPS Map Camera Lite</p> <p>Latitude 21.2350263° Longitude 72.818565° Local 02:43:49 PM Altitude -0 meters GMT 09:13:49 AM Tuesday, 02.01.2024</p>	 <p>GPS Map Camera</p> <p>Chadchan, Karnataka, India NH561A, Vidya Nagar maradi, Chadchan, Karnataka 586205, India Lat 17.307702° Long 75.665627° 23/01/23 09:26 AM GMT +05:30</p> <p>Google</p>
Tube Well-3	Tube Well-4
 <p>GPS Map Camera Lite</p> <p>8M58+557, Chadchan, Karnataka 586205, India</p> <p>Latitude 17.30807099° Longitude 75.66532553° Local 11:33:58 AM Altitude 452 meters GMT 06:03:58 AM Saturday, 27.01.2024</p>	 <p>GPS Map Camera Lite</p> <p>8M58+557, Chadchan, Karnataka 586205, India</p> <p>Latitude 17.30807099° Longitude 75.66532553° Local 11:36:23 AM Altitude 452 meters GMT 06:06:23 AM Saturday, 27.01.2024</p>



OPEN WELL RECHARGE





3. CONSTRUCTION OF TANKS AND BUNDS




Principal
Shri Sangameshwar Arts & Comm. College
Chadchan-586205 Dist: Vijayapur

College Code-5221,5262 & 9512

Website : www.ssacollegechadchan.com

e-mail : ssacollege_chadchan@yahoo.com & ssacollege@gmail.com

Principal : rathodshiva31@gmail.com

ಮರಣ ಮಹೋತ್ಸವ ವರ್ಷಾಚರಣೆ : 2022-23
Celebrating Golden Jubilee Year : 2022-23

ಶ್ರೀ ಸಂಗಮೇಶ್ವರ ಕಲಾ ಹಾಗೂ ವಾಣಿಜ್ಯ ಮಹಾವಿದ್ಯಾಲಯ



ಶ್ರೀ ಸಂಗಮೇಶ್ವರ ಕಲಾ ಹಾಗೂ ವಾಣಿಜ್ಯ ಮಹಾವಿದ್ಯಾಲಯ

SHRI SANGAMESHWAR EDUCATION
SHRI SANGAMESHWAR ARTS AND COMMERCE COLLEGE
CHADCHAN- 586205 Dist: Vijayapur
Re-Accredited At 'A' Grade By NAAC, 3.02
(Affiliated To Rani Channamma University)

WATER TANKS



Principal
Shri Sangameshwar Arts & Comm. College
Chadchan-586205 Dist: Vijayapur

College Code-5221,5262 & 9512

Website : www.ssacollegechadchan.com

e-mail : ssacollege_chadchan@yahoo.com & ssacollege@gmail.com

Principal : rathodshiva31@gmail.com

ಮರಣ ಮಹೋತ್ಸವ ವರ್ಷಾಚರಣೆ : 2022-23
Celebrating Golden Jubilee Year : 2022-23

ಶ್ರೀ ಸಂಗಮೇಶ್ವರ ಕಲಾ ಹಾಗೂ ವಾಣಿಜ್ಯ ಮಹಾವಿದ್ಯಾಲಯ



ಶ್ರೀ ಸಂಗಮೇಶ್ವರ ಕಲಾ ಹಾಗೂ ವಾಣಿಜ್ಯ ಮಹಾವಿದ್ಯಾಲಯ

SHRI SANGAMESHWAR EDUCATION
SHRI SANGAMESHWAR ARTS AND COMMERCE COLLEGE
CHADCHAN- 586205 Dist: Vijayapur
Re-Accredited At 'A' Grade By NAAC, 3.02
(Affiliated To Rani Channamma University)

WATER TANKS



GPS Map
Camera Lite

8M58+557, Chadchan, Karnataka 586205, India

Latitude
17.30807099°

Local 09:40:32 AM
GMT 04:10:32 AM

Longitude
75.66532553°

Altitude 452 meters
Friday, 26.01.2024




Principal

Shri Sangameshwar Arts & Comm. College
Chadchan-586205 Dist: Vijayapur



5. MAINTENANCE OF WATER BODIES AND DISTRIBUTION SYSTEM IN THE CAMPUS





ಶ್ರೀ ಸಂಗಮೇಶ್ವರ ಕಲಾ ಹಾಗೂ ವಾಣಿಜ್ಯ ಮಹಾವಿದ್ಯಾಲಯ

SHRI SANGAMESHWAR EDUCATION
SHRI SANGAMESHWAR ARTS AND COMMERCE COLLEGE
CHADCHAN- 586205 Dist: Vijayapur
Re-Accredited At 'A' Grade By NAAC, 3.02
(Affiliated To Rani Channamma University)

MAINTENANCE OF WATER BODIES AND DISTRIBUTION SYSTEM IN THE CAMPUS

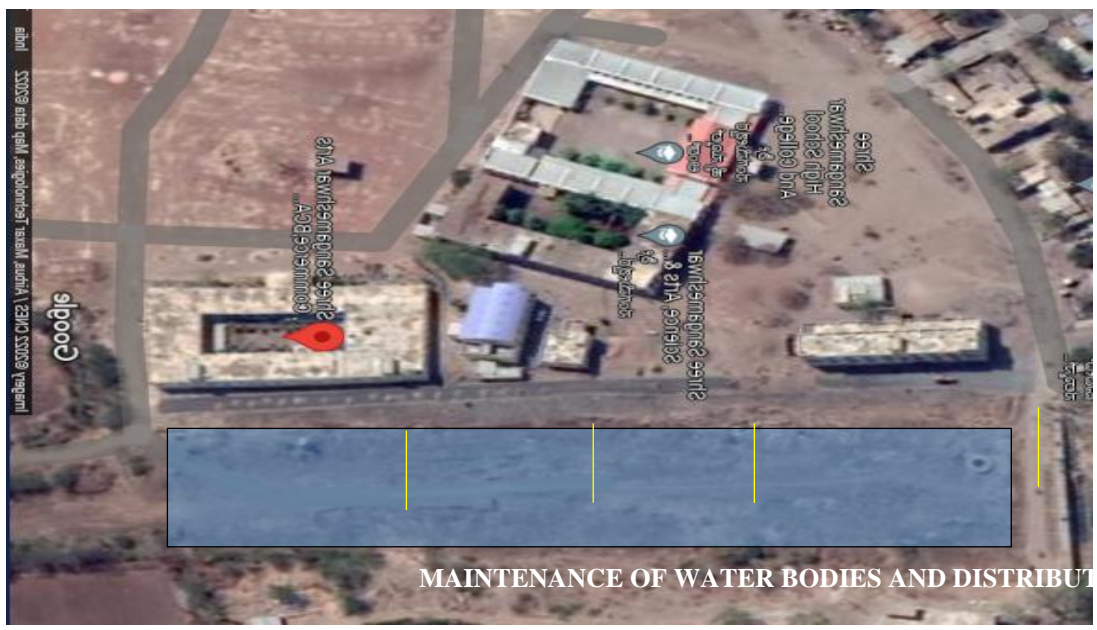




ಶ್ರೀ ಸಂಗಮೇಶ್ವರ ಕಲಾ ಹಾಗೂ ವಾಣಿಜ್ಯ ಮಹಾವಿದ್ಯಾಲಯ

SHRI SANGAMESHWAR EDUCATION SHRI SANGAMESHWAR ARTS AND COMMERCE COLLEGE CHADCHAN- 586205 Dist: Vijayapur
Re-Accredited At 'A' Grade By NAAC, 3.02 (Affiliated To Rani Channamma University)

MAINTENANCE OF WATER BODIES AND DISTRIBUTION SYSTEM IN THE CAMPUS



MAINTENANCE OF WATER BODIES AND DISTRIBUTION SYSTEM IN THE CAMPUS




Principal
Shri Sangameshwar Arts & Comm. College
Chadchan-586205 Dist: Vijayapur



MAINTENANCE OF WATER BODIES AND DISTRIBUTION SYSTEM IN THE CAMPUS

